



Funded by FaHCSIA

About the Consortium

- Womens Health & family Services is located at 227 Newcastle Street, Northbridge
- New building
- Strengthening Families
- WHFS is an integrated service, including;
 - AOD
 - Health and Medical
 - Domestic Violence
 - Indigenous services
 - Mental Health
 - Community Development
 - Children's services

Consortium Partners

- Women's Health and Family Services (Lead agency)
- Clan WA
 - Parenting, training and workshops
- Saranna
 - Residential Rehabilitation Centre for Women with Children

Aims

- To provide support to children and their families in order to minimise the harmful effects of parental substance use on child well being and to strengthen family resilience
- To build capacity across AOD, Child Protection and Family Support sectors to better address the needs of the target group and their families

Objectives

1. Reduction in the psychological and physical harmful effects of parental substance use on their children
2. Improvement in the children's overall emotional health, well being and social functioning
3. Improved relationships ,communication and life skills for children, parents and their families

Objectives

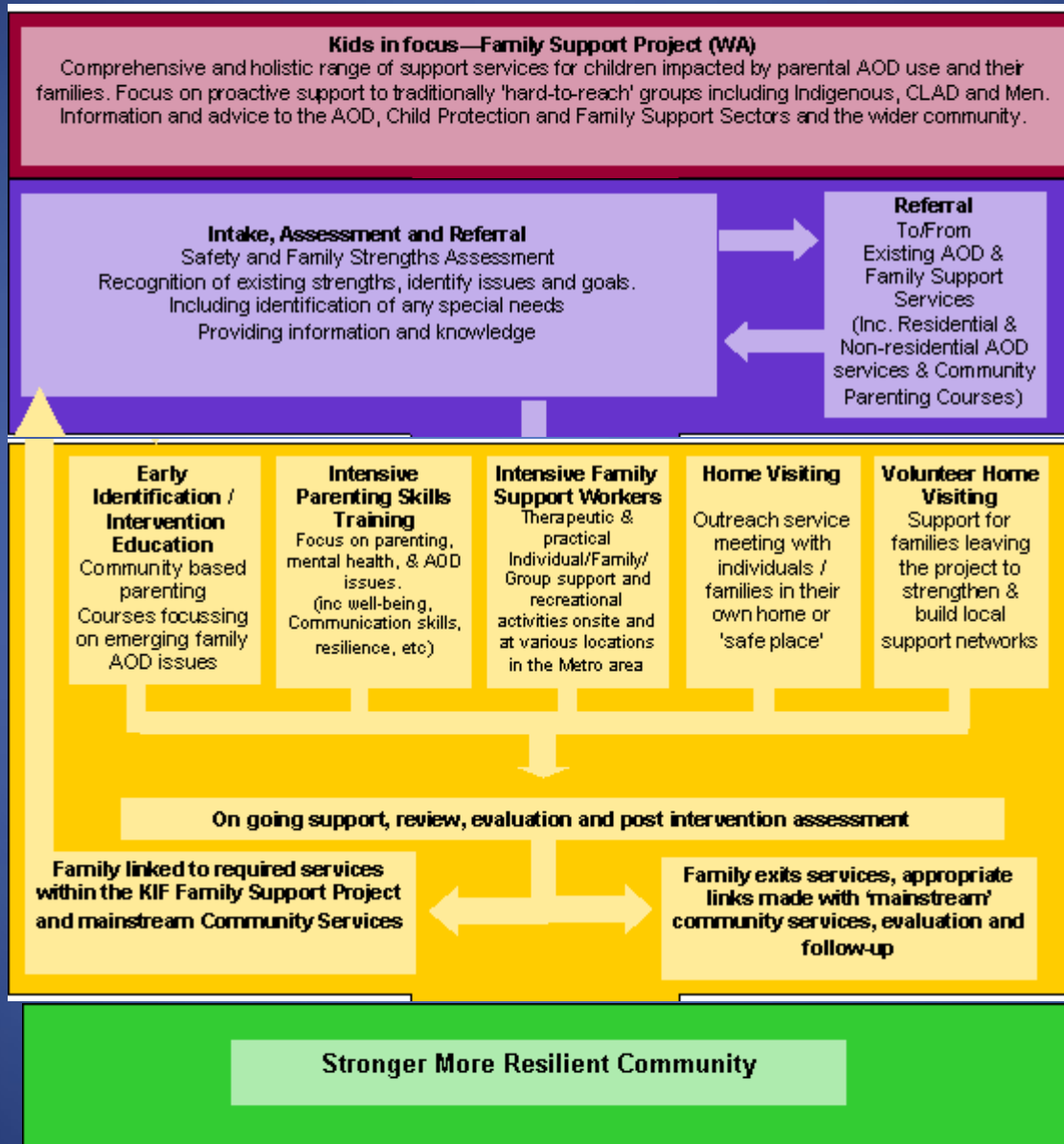
4. Increased access and participation of the target group children and their families to mainstream services and community activities.
5. Increased collaboration and partnerships between the AOD, family support and child welfare sectors to enhance effective service delivery to the target group and contribute to the development of a Best Practice model for target group children and their families

Service Delivery Model

Evidence Based Model Includes:

- Emphasis on direct services to the target group families
- Active engagement strategy
- Multi service delivery
- Practical support that acknowledges the marginalised nature of these families
- Focus beyond drug use
- Activities that reduce isolation and promote connection to community
- Opportunity for longer term support
- All of family approach

Kids in Focus Support Project (WA) Referral Pathways & Continuum of Care



Challenges

- Moving to a new custom made building
- Promotion
- FRSP on line
- Registering children
- Staff recruitment
- KEMH- MOU

Successes

- Official Launch of KIF WA on October 07 2010 in Hyde Park with about 200 women, men and children. The Child Commissioner, Terry Murphy DG of Child Protection and the FaHCSIA state manager Richard Aspinall were the speakers. Margaret Colbung provided welcome to country. It was a kid and family friendly day with a bouncy castle, cupcake decorating, face painting, gym bus etc. Pictures to follow
- Service delivery began almost immediately once funding was received. As of December 31 approximately 26 target group children have accessed individual and group counselling services.
- The KIFWA coordinator Ingrid Stotesbury and child therapist Marye Wade have also developed and delivered a pilot “Stress Busters” group for school age children.
- Four school holiday programs have been completed –one event being the KIF launch. Activities included Zone 3 with 17 families attending including 40 children, Zumba and puppet making with 10 families participating and family movie passes were provided to 20 families. An end of year christmas party was also a huge success.

Successes

- In January, a successful client retreat at Point Walter with 15 families attending
- • The parenting support worker Sam Zelones has provided ongoing parenting support sessions to 10 parents. The demand for this service is increasing as the good news about its effectiveness spreads. Sam also delivered one group based parenting support series to a largely multi cultural group of mothers. She will be delivering another one in each quarter of next year.
- • Increased referral sources including refuges, DCP and Community Education Services.
- • The KIFWA logo has also been developed as has a banner, pamphlet and website under construction.
- • All staff have now completed the Signs of Safety risk assessment framework used by DCP and regularly attend case conferences and consultations.
- • Other relevant training undertaken include child focussed therapies, mandatory reporting requirements, Culturally Specific training and Drumbeats. KIFWA will be completing the Parenting Under Pressure training in August.

KIFWA Launch

